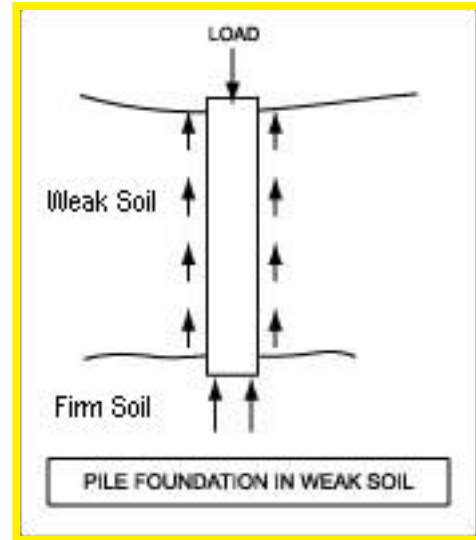
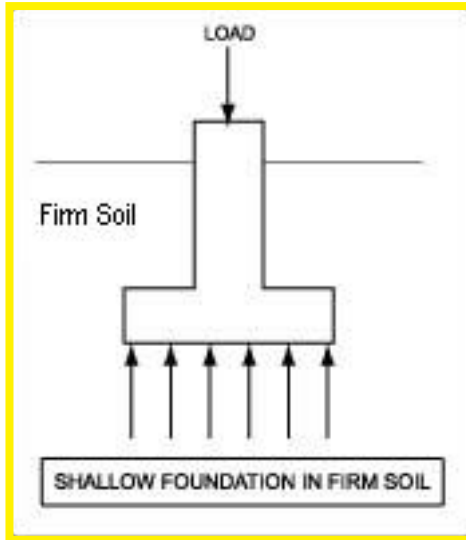


Pile foundation

• Load transfer from stata to soil.



• Comparison Of Pile

• Driven Pile

Advantage

- Lower cost.
- Provide higher load than other piles with the same size.

Disadvantage

- Can not pass through hard layer (Depth limitation).
- Transportation limitation (Likewise legth limitation).
- Vibration developed during installation .

• Bore Pile

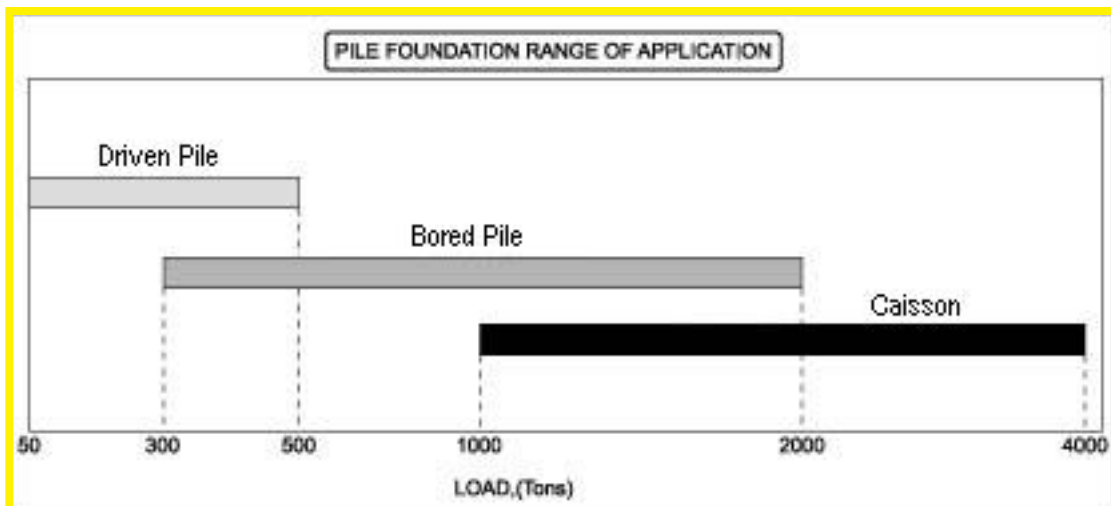
Advantage

- No limitation in depth and size (depends on the rig size) .
- Can pass through hard layer (multiple soil layer).
- Less vibration developed during installation .

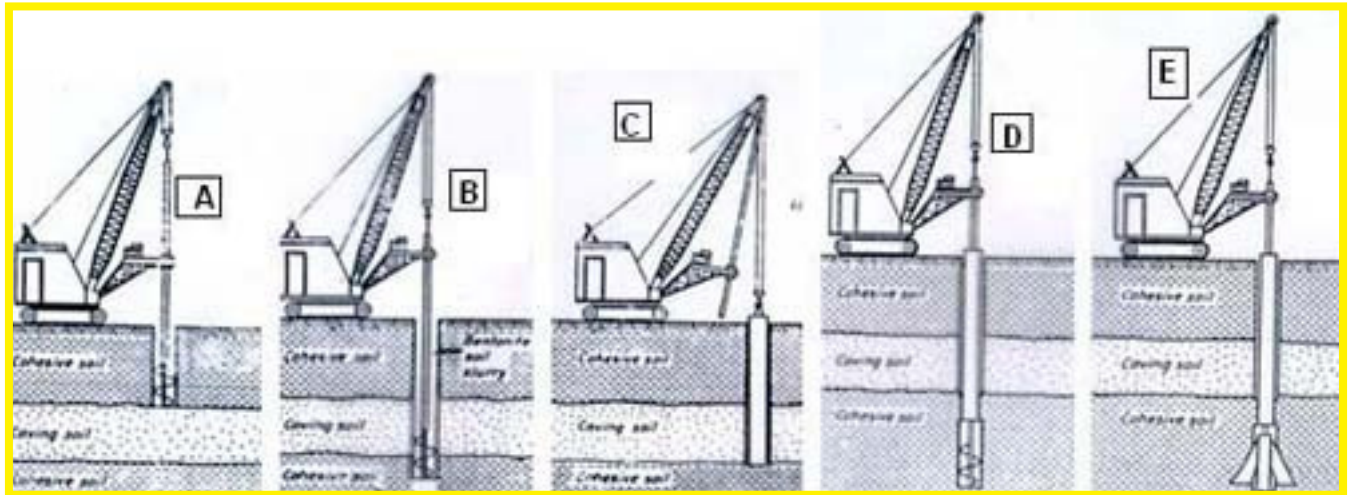
Disadvantage

- Higher cost.
- Gives lower load capacity than driven pile with the same size.

• Pile Foundation Rrage of Applications.



• *Pile Foundation Range of Applications.*



- A. Dry augering through self-supporting cohesive soil
- B. Augering through waterbearing cohesionless soil with aid slurry
- C. Setting casing
- D. Dry augering into cohesive soil after sealing casing
- E. Forming bell